



An iconic address in the hub of Sandton Central! Get your new office in this newly renovated, multi-level office building and Wow your clients.



This upmarket A-Grade office building is located on the iconic Fredman drive. Close to the JSE and Sandton amenities.

There is access to all major roads and transport networks and within walking distance to Sandton Shopping Centre.

There is also proximity to all the major amenities the Sandton CBD has to offer.

## BUILDING FEATURES



24/7 SECURITY



GREEN EFFICIENCIES

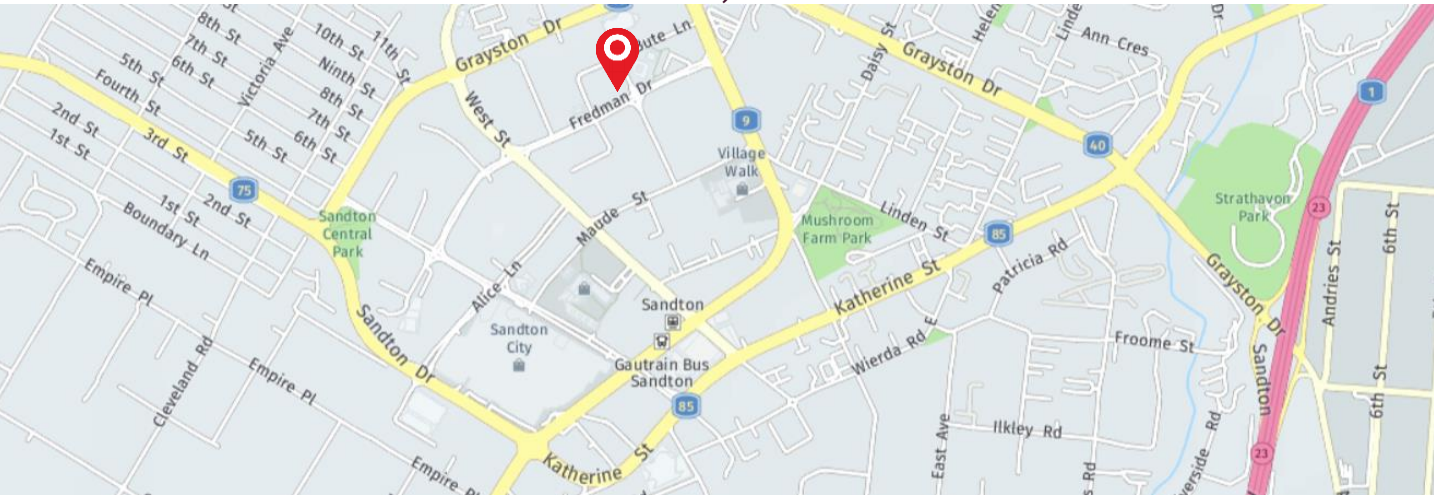


EMERGENCY WATER BACK-UP



FULL-ON LOAD GENERATORS

## Corner Fredman Drive and Bute Lane, Sandton



## AMENITIES



Sandton City - 650m



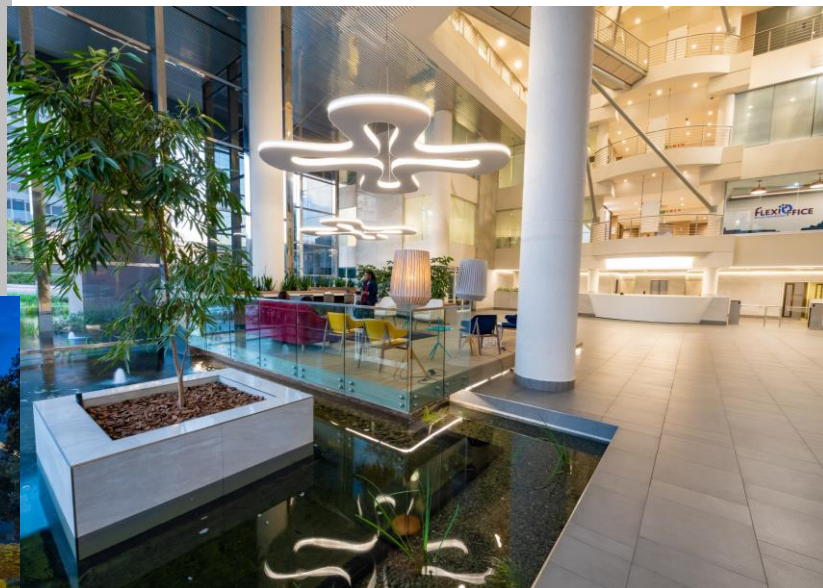
M1 Highway - 2.1km



Gautrain Station - 950m



Benmore Gardens Shopping Centre - 650m



## CONTACT

Michelle Howison

+27 82 879 1434

[Mhowison@growthpoint.co.za](mailto:Mhowison@growthpoint.co.za)

[www.growthpoint.co.za](http://www.growthpoint.co.za)